

Esaflor® T

Experience the tamarind touch

Modern consumers expect beauty products to be safe and sustainable, with strong performance and measurable benefits. The challenge for brands is to use eco-conscious ingredients that deliver the same, if not better, results as traditional products.

ESAFLOR® T is a cutting-edge tamarind derivative, which combines ready biodegradability, tangible efficacy and excellent sensoriality. Enhancing the innate properties of tamarind through scientific innovation, it stands out for its exceptional performance in hair and skin care, while preserving its natural essence.



Ready
biodegradability

Upcycled
ingredient

360°
sensoriality
enhancement

ISO 16128-2
Natural Origin
Index > 0.85

Tangible
conditioning
results

Tamarind: a botanical treasure

Tamarind (*Tamarindus indica L.*) is a tropical fruit-bearing tree. Throughout history, its leaves, bark, wood, and fruits have been cherished for their nutritional and medicinal properties. The natural gum extracted from the seeds, discarded by the feed and food industry, forms the basis of ESAFLOR® T. Showcasing the innovative transformation of a by-product into a high-performance beauty solution, ESAFLOR® T is an innovative, upcycled and readily biodegradable ingredient.

Applications

ESAFLOR® T is a versatile conditioning ingredient, ideal for hair care and skin care.

- **Hair Care:** outstanding conditioning effect, detangling properties and an all-round sensoriality enhancement. Not only hair is easier to comb, but it looks shinier, it feels softer and smoother and the unaesthetic fly-away is reduced.
- **Skin Care:** in skin cleansers, liquid soaps and body washes it improves foam attributes, for a rich and creamy texture, while leaving skin silky and soft. In emulsions it delivers an extremely pleasant and velvety touch, enhancing skin-feel during and after application.

Summary of benefits

- Upcycled conditioning agent, for hair and skin
- Readily biodegradable
- Natural and renewable origin
- Hair easy to comb
- Enhanced hair shine
- Superior hair softness
- Anti-static effect on hair
- No build-up and no heavy feel
- Silky and soft skin-feel
- Improved foam characteristics, in combination with surfactants

INCI name – proposed:
Quaternized Carboxymethyl
Tamarind



Nettle Purifying Shampoo

LAMCOS 247

Phase	Ingredient name	% w/w
A		
1	Aqua (Water)	To 100
2	Sodium Coco-Sulfate (~100% a.m.)	6.0
B		
1	Aqua (Water)	35.0
2	Glycerin	3.0
3	ESAFLOR® T	0.3
C		
1	Lauryl Glucoside (~50% a.m.)	8.0
2	EUCAROL® AGE/EC MB	10.0
3	Glycerin, Aqua (Water), Urtica Dioica (Nettle) Leaf Extract	0.5
4	Preservatives	q.s.
5	Parfum (Fragrance)	q.s.
6	CI 42090	q.s.
7	Citric Acid, 20% soln.	To pH ~ 5.0

General characteristics:

Appearance: slightly translucent viscous liquid
 Viscosity (Brookfield RVT, 25°C, 20 rpm): ~ 4000 mPa.s
 pH: ~ 5.0

Mauve Body Butter

LAMCOS 251

Phase	Ingredient name	% w/w
A		
1	Aqua (Water)	To 100
2	Glycerin	10.0
3	ESAFLOR® HM 22	0.3
4	ESAFLOR® T	0.5
5	Citric Acid, 20% soln.	To pH ~ 5.5
B		
1	TEWAXTC 65	3.5
2	Butyrospermum Parkii (Shea) Butter	20.0
3	Cocos Nucifera (Coconut) Oil	5.0
4	Cetyl Alcohol	2.0
C		
1	Preservatives	q.s.
2	Parfum (Fragrance)	q.s.
3	Glycerin, Aqua (Water), Malva Sylvestris (Mallow) Leaf Extract	0.5
4	Citric Acid, 10% soln.	To pH ~ 5.5

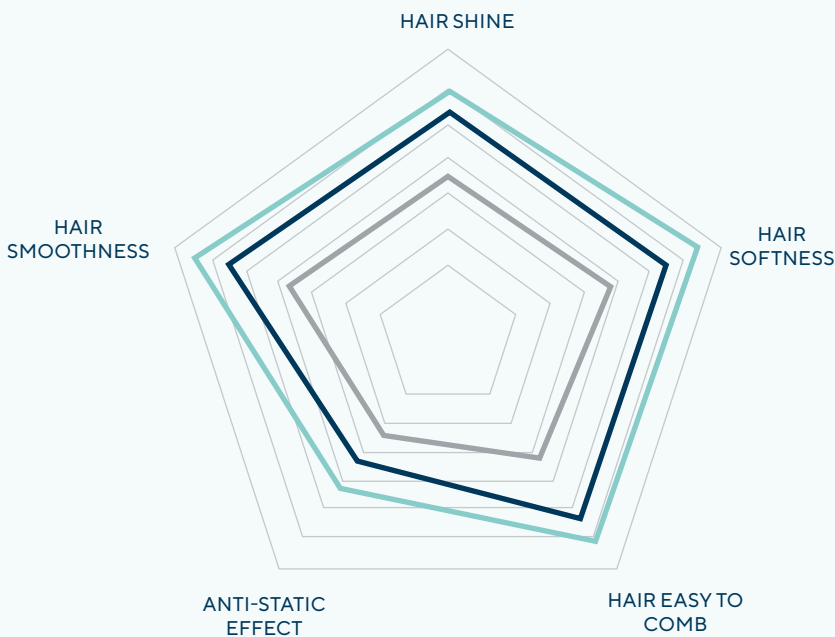
General characteristics:

Appearance: glossy thick emulsion
 Viscosity (Brookfield RVT + Helipath, 10 rpm, 25°C, 30''): ~ 70000 mPa.s
 pH: ~ 5.5

Sensory benefits

Experts' evaluations on dry hair

- Placebo
- Esaflor® T
- Polyquaternium-10



ESAFLOR® T outperforms Polyquaternium-10.

For more information please contact:

Personal Care Headquarter | Via Marsala, 38/d | 21013 Gallarate (VA) | Italy
 T + 39 0331 715 824 | cosmetics@lamberti.com
 personalcare.lamberti.com